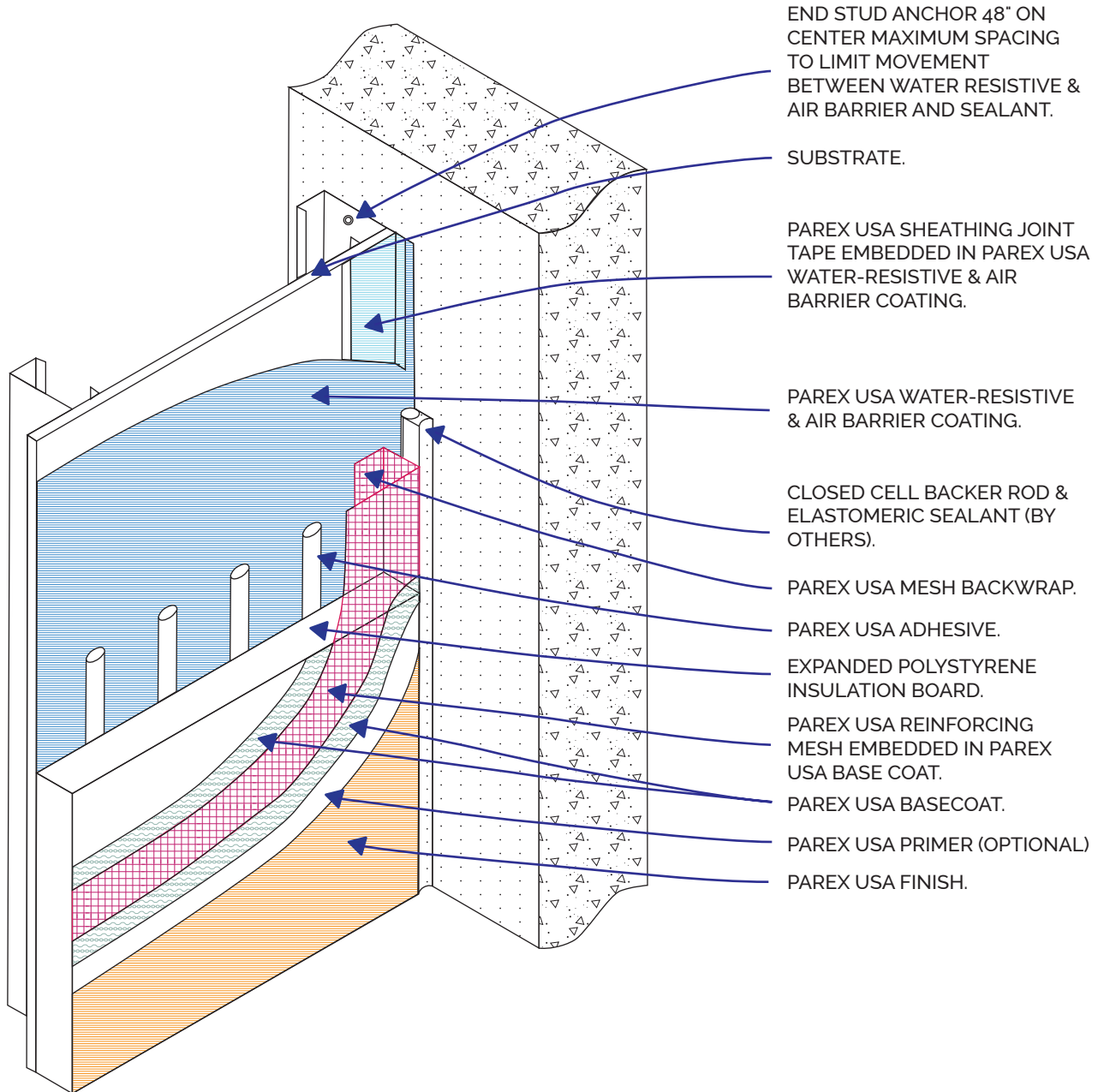


WATERMASTER CI



END STUD ANCHOR 48" ON CENTER MAXIMUM SPACING TO LIMIT MOVEMENT BETWEEN WATER RESISTIVE & AIR BARRIER AND SEALANT.

SUBSTRATE.

PAREX USA SHEATHING JOINT TAPE EMBEDDED IN PAREX USA WATER-RESISTIVE & AIR BARRIER COATING.

PAREX USA WATER-RESISTIVE & AIR BARRIER COATING.

CLOSED CELL BACKER ROD & ELASTOMERIC SEALANT (BY OTHERS).

PAREX USA MESH BACKWRAP.

PAREX USA ADHESIVE.

EXPANDED POLYSTYRENE INSULATION BOARD.

PAREX USA REINFORCING MESH EMBEDDED IN PAREX USA BASE COAT.

PAREX USA BASECOAT.

PAREX USA PRIMER (OPTIONAL)

PAREX USA FINISH.

SWM E1.01 INSIDE CORNER TERMINATION

REV. DATE: 05/04/18

NOTES: 1. To ensure a continuous air barrier across the building envelope, a continuous air seal should be made at each substrate change, joints/gaps, penetrations and dissimilar material terminations. These must be a consideration of the designer in the overall wall assembly design.

Disclaimer: The design specifications and construction shall comply with all local building codes and standards. Parex USA installation guidelines are for general information and guidance only and Parex USA specifically disclaims any liability for the use of this design and for design engineering or workmanship of any project. The assembly shall be designed to prevent condensation within the assembly. The designer and the user shall provide final drawings and specifications. Products shown other than those manufactured by Parex USA are shown for clarity of the Parex USA product only. Contact the manufacturer of such other products for installation instructions.