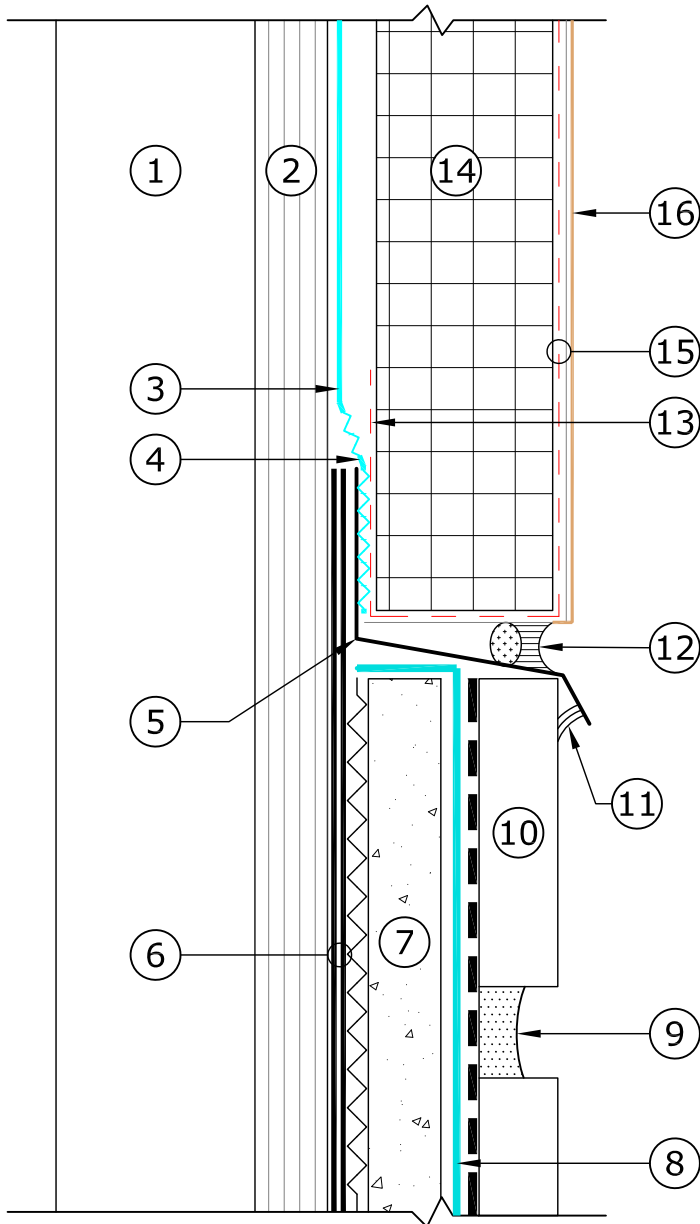


KEY NOTES



- ① FRAMING (WOOD OR STEEL)
- ② SHEATHING
- ③ PAREX USA WATER-RESISTIVE BARRIER, (SEE NOTE 1)
- ④ PAREX USA SHEATHING JOINT TAPE EMBEDDED IN PAREX USA WATER- RESISTIVE BARRIER
- ⑤ NON CORROSIVE METAL DRIP EDGE (BY OTHERS)
- ⑥ 2 LAYERS OF WATER RESISTANT BUILDING PAPER OVERLAPPED BY STUCCO LATH PER ASTM C1063
- ⑦ PORTLAND CEMENT PLASTER BASECOAT CONFORMING TO ASTM C926 (SEE NOTE 3)
- ⑧ PAREX USA WEATHERBLOCK SP1, (SEE NOTE 2)
- ⑨ GROUT
- ⑩ ADHERED MASONRY VENEER WITH PAREX USA MASONRY VENEER ADHESIVE, (SEE NOTE 4)
- ⑪ ELASTOMERIC SEALANT (BY OTHERS)
- ⑫ BACKER ROD & ELASTOMERIC SEALANT W/ WEEP HOLES SPACED @ 16" O.C. (BY OTHERS)
- ⑬ PAREX USA REINFORCING MESH BACKWRAP
- ⑭ PAREX USA APPROVED INSULATION BOARD ADHERED WITH VERTICAL RIBBONS OFF PAREX USA ADHESIVE
- ⑮ PAREX USA REINFORCING MESH EMBEDDED IN PAREX USA BASECOAT & ADHESIVE
- ⑯ PAREX USA FINISH

MVS - STANDARD - T1.03 TERMINATION WITH EIFS

MASONRY VENEER STANDARD SYSTEM

DATE: 01/01/17
SCALE: N.T.S.

NOTES:

- 1. Parex USA Water-Resistive Barrier options: A. WeatherSeal Spray & Roll-On, WeatherSeal Trowel-On, or approved equal.
- 2. WeatherBlock SP1 Spray & Roll-On (vapor impermeable). (OPTIONAL)
- 3. Portland cement plaster is installed per applicable building code.
- 4. Follow code requirements for adhered veneer dimensions and weights.

Disclaimer : The design, specifications, and construction shall comply with all local building codes and standards. Parex USA installation guidelines are for general information and guidance only and Parex USA specifically disclaims any liability for the use of this design, and for design, engineering, or workmanship of any project. The assembly shall be designed to prevent condensation within the assembly. The designer and the user shall provide final drawings and specifications. Products shown other than those manufactured by Parex USA are shown for clarity of the Parex USA product only. Contact the manufacturer of such other products for installation instructions.