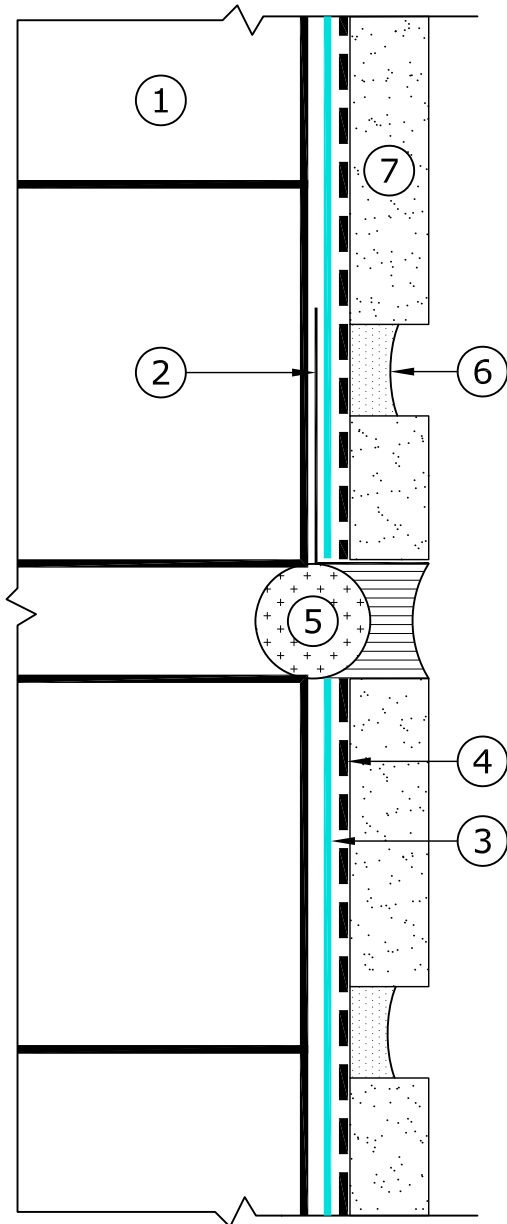


KEY NOTES

- ① CMU
- ② OPTIONAL NON CORROSIVE METAL ANGLE
- ③ PAREX USA WEATHERBLOCK SP1, (SEE NOTE 2)
- ④ PAREX USA MASONRY VENEER ADHESIVE
- ⑤ BACKER ROD & ELASTOMERIC SEALANT (BY OTHERS)
- ⑥ MASONRY VENEER, (SEE NOTE 3)
- ⑦ GROUT



MVS - CMU - E1.01 CAULKED VERTICAL OR HORIZONTAL JOINT

MASONRY VENEER CMU SYSTEM

DATE: 01/01/17
SCALE: N.T.S.

NOTES:

- 1. WeatherBlock SP1 Spray & Roll-On (vapor impermeable). (OPTIONAL)
- 2. Follow code requirements for Adhered Veneer dimensions and weights.

Disclaimer : The design, specifications, and construction shall comply with all local building codes and standards. Parex USA installation guidelines are for general information and guidance only and Parex USA specifically disclaims any liability for the use of this design, and for design, engineering, or workmanship of any project. The assembly shall be designed to prevent condensation within the assembly. The designer and the user shall provide final drawings and specifications. Products shown other than those manufactured by Parex USA are shown for clarity of the Parex USA product only. Contact the manufacturer of such other products for installation instructions.