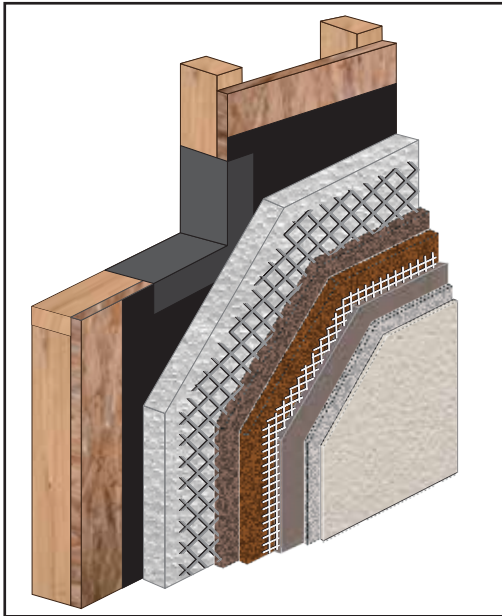




System Snapshot

Armourwall 100 CI Stucco Systems

Standard & Krak-Shield Systems



Parex Armourwall 100 CI Stucco is a 1-coat system that incorporate continuous rigid insulation, helping designers meet today’s code requirements and provides a durable exterior stucco façade with unique, refined aesthetic appeal. These minimum 3/8” thick assemblies can be installed at greater thicknesses in accordance with ASTM C926 as required for fire resistance rated assemblies or STC ratings. Enhanced Krak-Shield crack-resistance is available for all configurations by incorporating a reinforced leveling coat prior to application of the finish.

Suitable Types of Construction	Non-combustible	<input checked="" type="checkbox"/> Residential	<input checked="" type="checkbox"/> Commercial
	Combustible	<input checked="" type="checkbox"/> Residential	<input checked="" type="checkbox"/> Commercial
	Fire-Resistance Rated Walls	<input checked="" type="checkbox"/> Residential	<input checked="" type="checkbox"/> Commercial
	Application Type	<input checked="" type="checkbox"/> New	<input checked="" type="checkbox"/> Renovation
	Application Orientation	<input checked="" type="checkbox"/> Exterior Only	

Substrates	Gypsum Sheathing	Cement Fiber Sheathing
	Fiber Board	Concrete & CMU
	Exposure 1 OSB ¹	CDX Plywood ²

¹Regional restrictions apply. For OSB applications outside of approved regions, use Parex Standard WaterMaster LCR.
²See Tech Bulletin TB008 and TB011.

Code Approvals	ICC ESR-2564 State of Florida FL 12427
-----------------------	---

- System Notes**
- Stucco is a non-structural cladding. It depends on the substrate wall for support and attachment. Substrate construction must resist all design loads.
 - Sheathing attachment to framing must resist design negative windloads; loads are transferred to the framing. Appropriate safety factors must be applied.
 - All penetrations & non-draining terminations of the system must be made weather-tight.
 - Armourwall 100 stucco systems can be installed with lath or direct applied over CMU. When direct applied over CMU, Parex WeatherDry is installed over the brown coat prior to application of the finish. See Parex USA Tech Bulletin TB029.

Components

System options vary based on assembly selected. Review Parex Stucco Systems for more detailed system information.

➤ **WRB, Field Substrate**

- A code compliant water-resistive barrier

Used with Standard stucco assemblies.

➤ **Insulation Board**

- Extruded Polystyrene (XPS)
- Expanded Polystyrene (EPS)

- Maximum 2"
- Maximum 1.5"

➤ **Lath & Accessories**

- Minimum G60 Galvanized Steel
- OR -
- Rigid Polyvinyl Chloride (PVC)
- OR -
- Zinc Alloy

- Lath Locks: Wind-lock galvanized steel washer, 1 ¼" d, 24 gauge
- Metal Plaster Base: Minimum 17 gauge, self-furred, 2.5 lb/yd²
- Foundation Weep Screed, minimum 3 ½" vertical attachment flange

Note: Select appropriate lath & accessories for the building type.

➤ **Base/Brown Coat**

- Parex 210 or 202 Armourwall Stucco Base

Sanded and Concentrate formulations are available.

➤ **Stucco Admix (use with Scratch & Brown Coat materials)**

- Parex USA Adacryl Admix & Bonding Agent (optional)

For enhanced adhesion, curing, freeze-thaw stability & workability.

➤ **Krak-Shield, Enhanced Crack Resistance (Optional)**

- A Parex 121 Basecoat & Adhesive*
or Parex USA Stucco Level Coat
- Reinforcing Mesh: 4.5 oz or 12 oz for stucco applications

** Select the formulation most suitable for the project*

➤ **Primer (Optional, use with acrylic & elastomeric finish materials)**

- A Parex USA primer suitable for finish selected

The use of primer enhances appearance and uniformity of the finish, improves finish coverage rates, helps prevent efflorescence, and promotes adhesion.

➤ **Finish or Coating**

- A Parex acrylic, elastomeric or specialty finish

➤ **Sealers & Accent Stains (Optional)**

- A Parex USA sealer or accent stain to enhance aesthetics & cleanability.

Primarily used with specialty finishes

NOTE: EPS Features & Shapes can be added as desired.

PAREX®

Corporate Office

Parex USA, Inc., a California Corporation
4125 E. La Palma Ave., Suite 250
Anaheim, CA 92807
www.parex.com
866-516-0061
Tech Support: 800-226-2424

© Parex USA, Inc. November 2017 • SSS AW100CI 1117