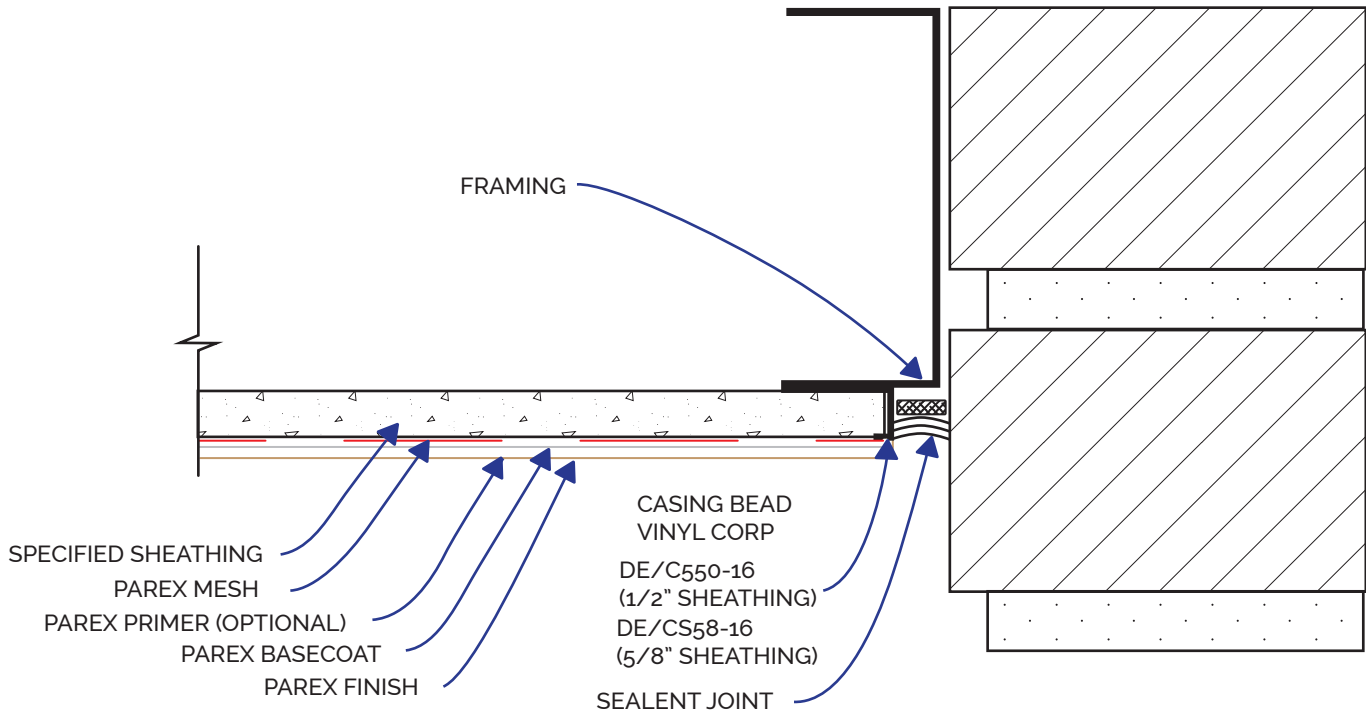


ACF SOFFIT SYSTEM



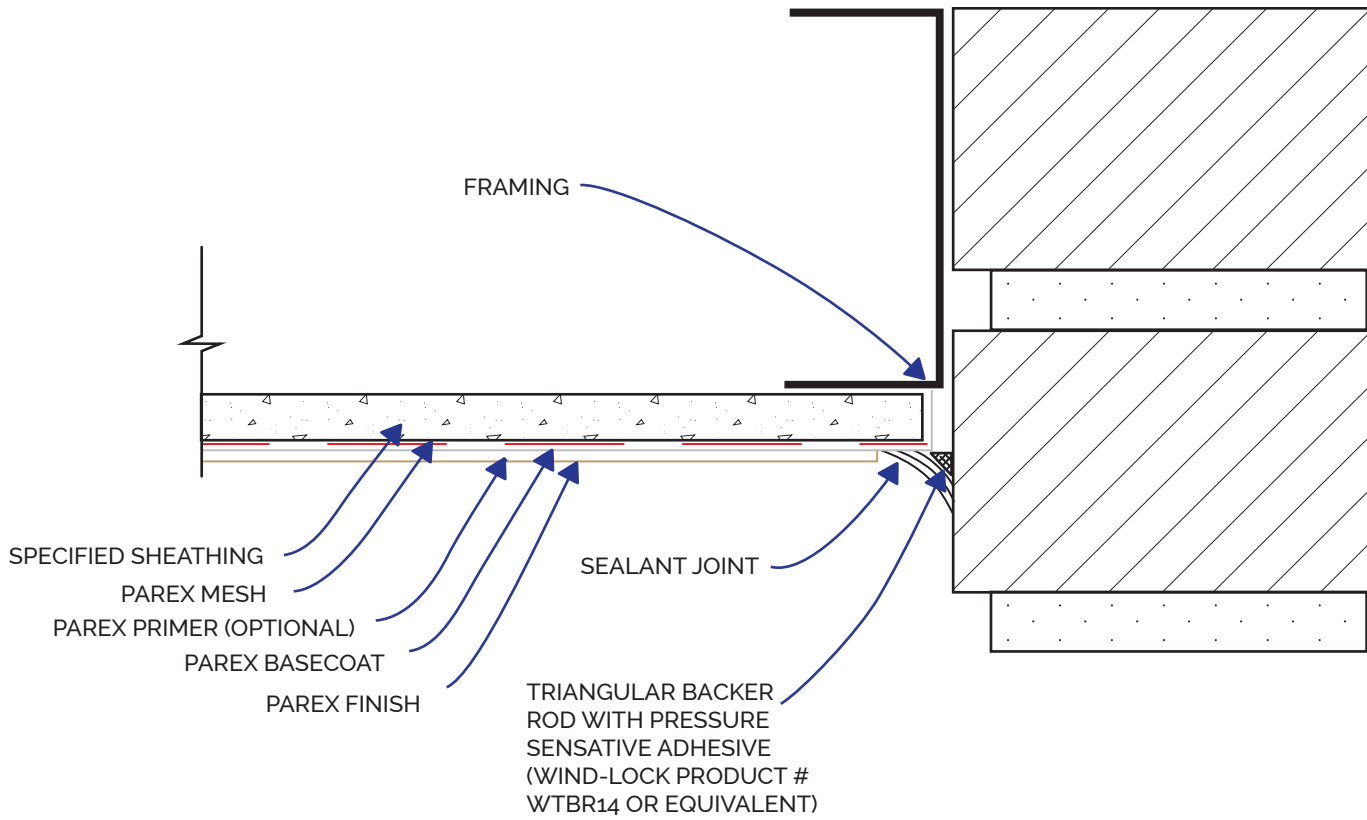
ACF SOFFIT 1.01 - EDGE TERMINATION

REV. DATE: 06/25/19

- NOTES: 1. Applicable for wood framing masonry and concrete also.
2. See eatherTech details for further information.

Disclaimer: The design specifications and construction shall comply with all local building codes and standards. Parex USA installation guidelines are for general information and guidance only and Parex USA specifically disclaims any liability for the use of this design and for design engineering or workmanship of any project. The assembly shall be designed to prevent condensation within the assembly. The designer and the user shall provide final drawings and specifications. Products shown other than those manufactured by Parex USA are shown for clarity of the Parex USA product only. Contact the manufacturer of such other products for installation instructions.

ACF SOFFIT SYSTEM



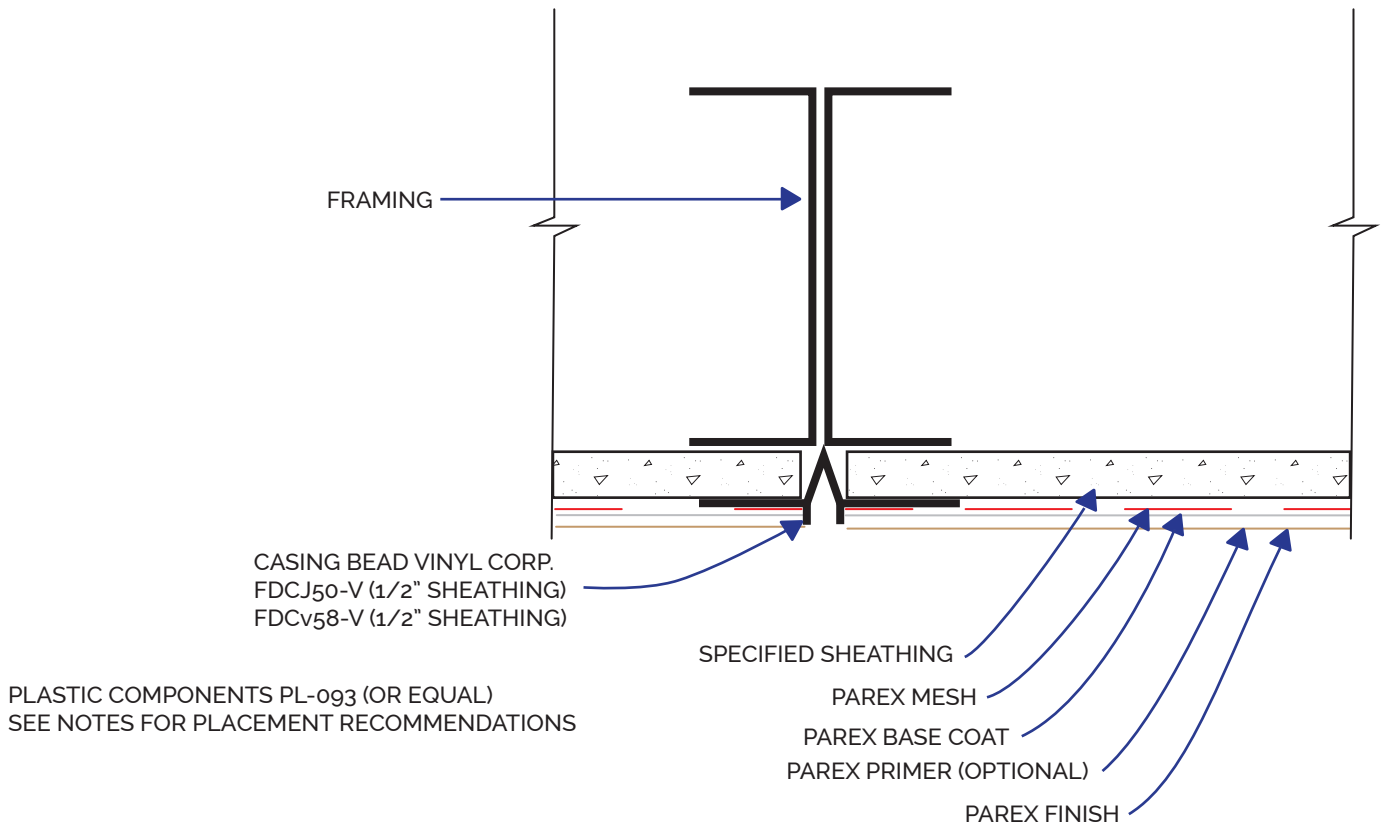
ACF SOFFIT 1.02 - EDGE TERMINATION

REV. DATE: 06/25/19

- NOTES: 1. Applicable for wood framing masonry and concrete also.
2. See eatherTech details for further information.

Disclaimer: The design specifications and construction shall comply with all local building codes and standards. Parex USA installation guidelines are for general information and guidance only and Parex USA specifically disclaims any liability for the use of this design and for design engineering or workmanship of any project. The assembly shall be designed to prevent condensation within the assembly. The designer and the user shall provide final drawings and specifications. Products shown other than those manufactured by Parex USA are shown for clarity of the Parex USA product only. Contact the manufacturer of such other products for installation instructions.

ACF SOFFIT SYSTEM



ACF SOFFIT 1.03 - CROSS SECTION & CONTROL JOINT

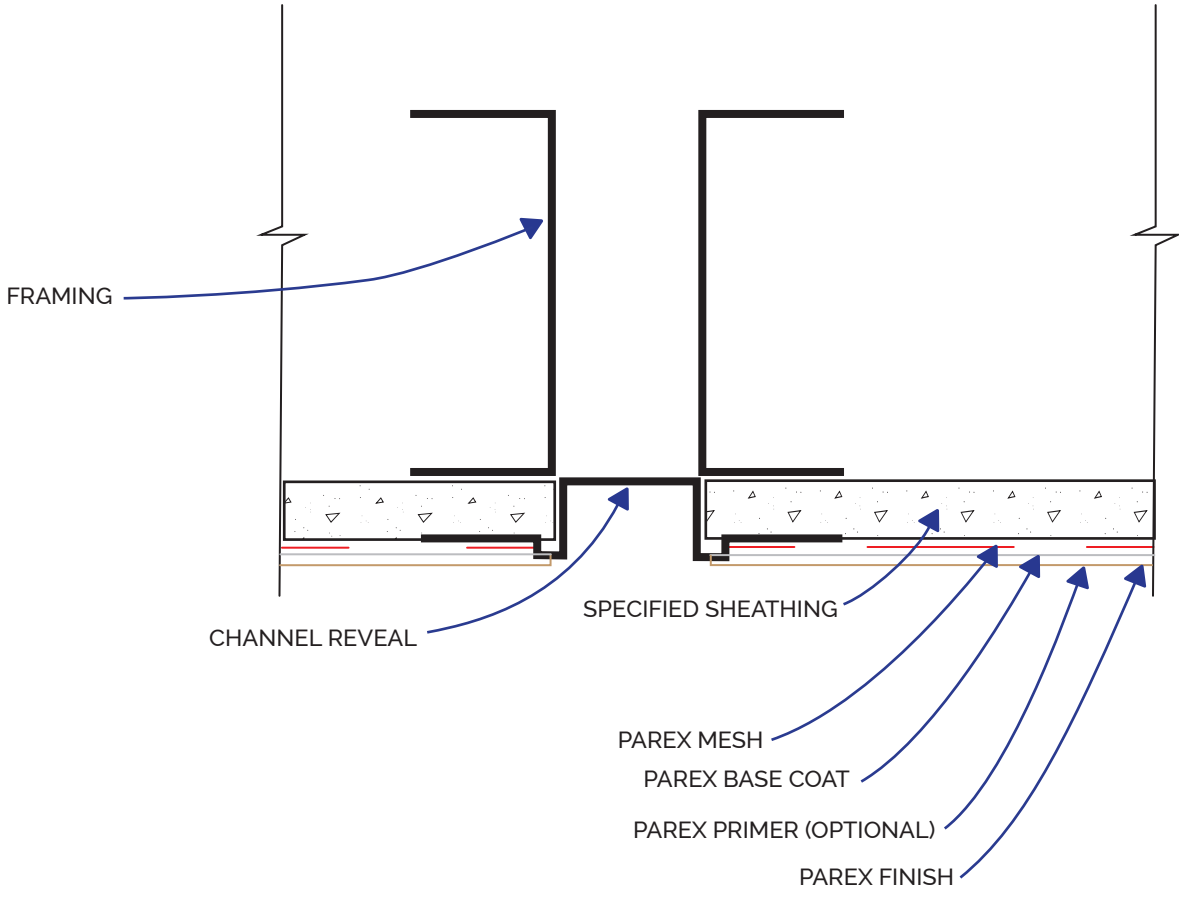
REV. DATE: 06/25/19

NOTES:

1. Control joints are required at the following locations (reference construction documents for specific locations):
 - A. No more than 32 lineal ft in any direction:
 - B. At dissimilar substrates and framing transitions
2. Double studs may be required at control joints or where it is needed to provide fastening base for the substrate board joints

Disclaimer: The design specifications and construction shall comply with all local building codes and standards. Parex USA installation guidelines are for general information and guidance only and Parex USA specifically disclaims any liability for the use of this design and for design engineering or workmanship of any project. The assembly shall be designed to prevent condensation within the assembly. The designer and the user shall provide final drawings and specifications. Products shown other than those manufactured by Parex USA are shown for clarity of the Parex USA product only. Contact the manufacturer of such other products for installation instructions.

ACF SOFFIT SYSTEM

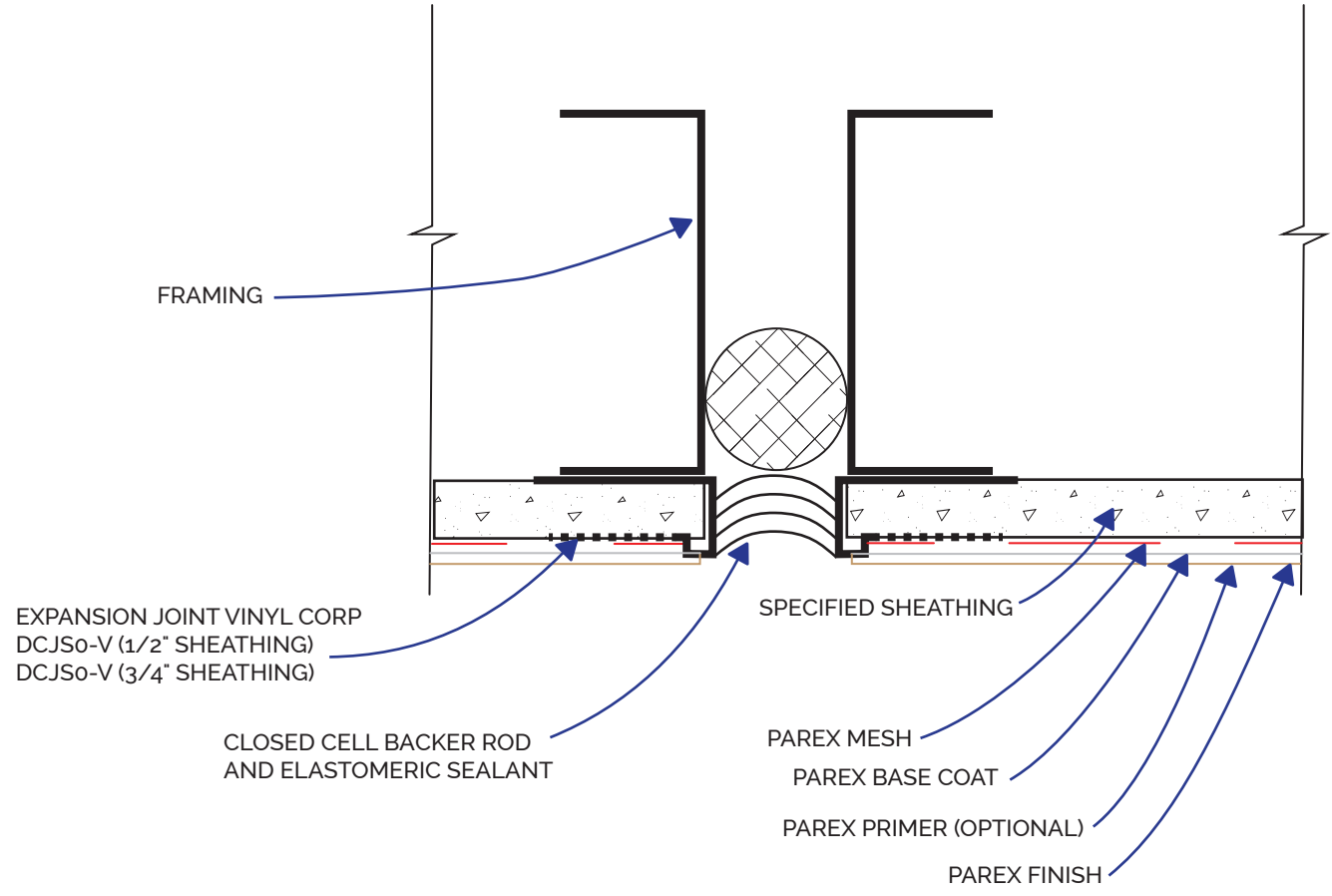


ACF SOFFIT 1.05 - CHANNEL REVEAL

REV. DATE: 06/25/19

Disclaimer: The design specifications and construction shall comply with all local building codes and standards. Parex USA installation guidelines are for general information and guidance only and Parex USA specifically disclaims any liability for the use of this design and for design engineering or workmanship of any project. The assembly shall be designed to prevent condensation within the assembly. The designer and the user shall provide final drawings and specifications. Products shown other than those manufactured by Parex USA are shown for clarity of the Parex USA product only. Contact the manufacturer of such other products for installation instructions.

ACF SOFFIT SYSTEM



ACF SOFFIT 1.06 - EXPANSION JOINT

REV. DATE: 06/25/19

Disclaimer: The design specifications and construction shall comply with all local building codes and standards. Parex USA installation guidelines are for general information and guidance only and Parex USA specifically disclaims any liability for the use of this design and for design engineering or workmanship of any project. The assembly shall be designed to prevent condensation within the assembly. The designer and the user shall provide final drawings and specifications. Products shown other than those manufactured by Parex USA are shown for clarity of the Parex USA product only. Contact the manufacturer of such other products for installation instructions.