

# PAREXUSA

---



Highlands Corporate Center – Renovation Project – Del Mar, CA

ProjectProfile

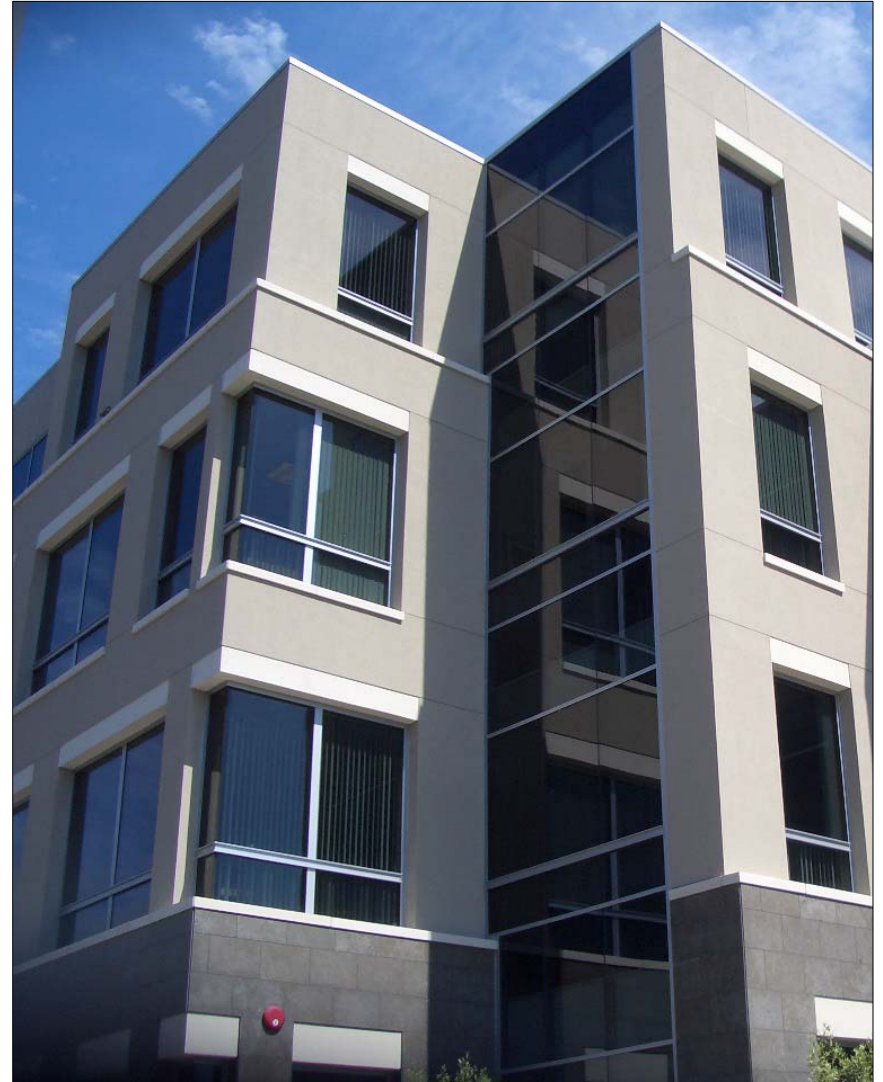
**Size:** 90,000 sq. ft.

**Distributor:** Squires-Belt Material Company

**Applicator:** Raymond San Diego, Inc.

Established in 1936, The Raymond Group has proven itself to be an industry leader and is often the source of choice for the owner, contractor and developer. Raymond provides the qualified manpower for any project - no matter its complexity or where it's located. We are able to effectively manage projects and integrate various disciplines and subcontractors to create specialized teams of the most qualified managers, design assistants, art directors and artisans available today to ensure that what we build lives up to your vision. From vital components like budgeting and scheduling of engineering, procurement of manpower to design assistance and samples, Raymond has the capability to create superior projects.

Raymond has full service offices in Southern California, Northern California and Las Vegas, as well as project offices across the country. Each office shares vital resources with a national network, including a strong central information system, giving our clients a high degree of confidence that overall project goals can be met.



#### The Challenge

- Original Brick Façade was leaking and failing
- Update look for a more modern appearance

#### The Solution

- Parex 121
- Parex 310 Primer
- LaHabra Basic926
- Fiber 47

 **LaHabra**® **PAREX**®