

# PAREXUSA

---



University of California, San Diego - Rita Atkinson Residences – La Jolla, CA

ProjectProfile

**Size:** 360,000 sq. ft.

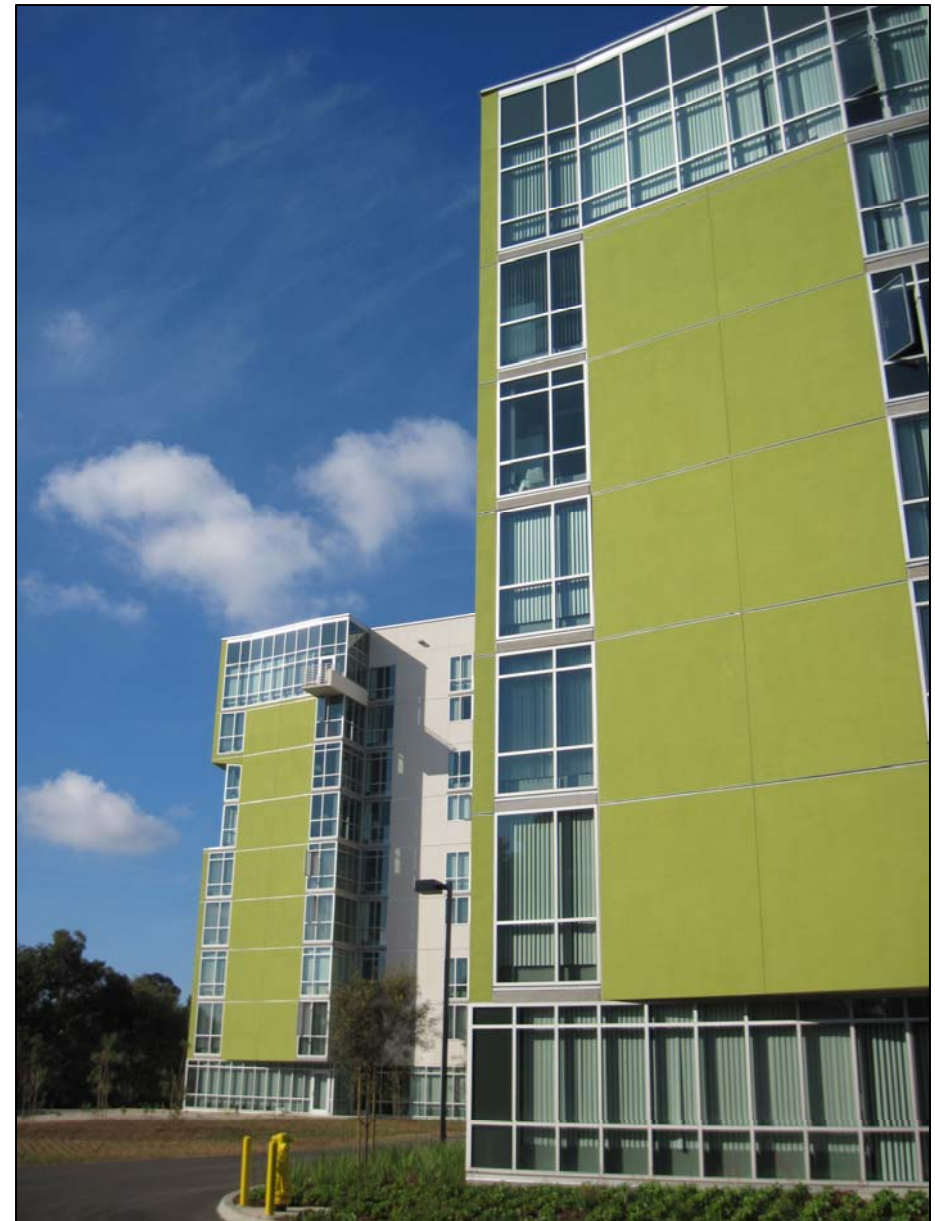
**Distributor:** Westside Building Materials

**Applicator:** Best Interiors

Best Interiors, Inc. is a full-service commercial drywall union subcontractor. The company was founded in 1986 with the strategic mission of building a commercial drywall company based on the business philosophy of "Quality and Service" at a competitive price. During our 20-year history, Best has succeeded in accomplishing this original strategic mission as we have earned a reputation for our quality and the ability to deliver projects on time and within budget.

Best is now recognized as an industry leader, with experience and expertise in both heavy and light gauge metal studs, drywall, tenant improvements and Core and Shell projects. We are committed to client satisfaction, high-quality workmanship, service and dependability. This is backed up by our team of professionals dedicated to the goal of exceeding our customers' expectations.

With offices in Orange County, San Diego, and the Inland Empire in California, Best is able to effectively manage projects in California. We have a nucleus of experienced foremen, and our crews are quality union craftsmen, including framers, hangers, tapers, and EIFS installers. This experienced work force has the commitment of doing high quality work within budget.



**Products Used:**

- Parex 121 Dry
- Parex 310
- Parex 533 Sand Smooth
- Parex Custom Color

**PAREX®**