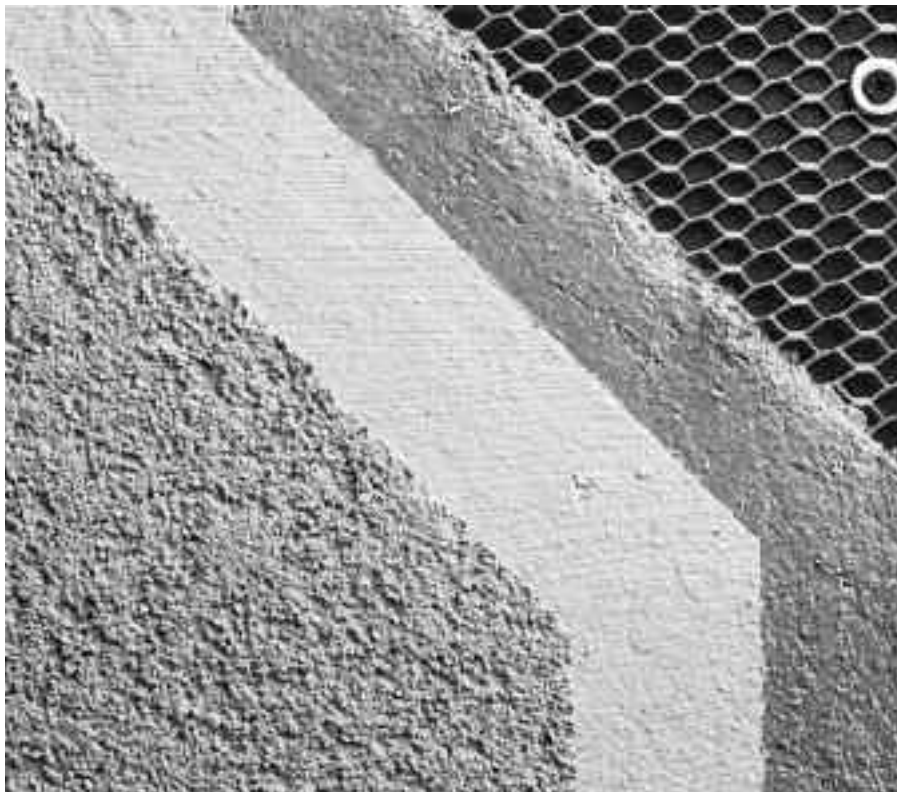




202 Armourwall

Stucco Base Sanded (Grey Couche®)



DESCRIPTION

- A pre-blended fibered, sanded one coat stucco
- Factory-blended mix that requires only the addition of water.
- Can be installed up to 1/2 in. (12.7mm) thick in one application

USES:

Stucco Base over:

- Concrete
- Masonry
- Metal lath

Lath is applied over:

1. Appropriate water resistive barrier over continuous sheathing
2. Expanded polystyrene (EPS). EPS is applied over building paper. Framing spacing is maximum 24 in. (610 mm.) on center

COMPOSITION:

Binder: Portland Cement

- Filler: Synthetic fibers
- Graded aggregates and organic additives
- Color: Light grey

MATERIAL STANDARDS:

Cement: ASTM C 150

Lime: ASTM C 206

Fibers: ASTM C 1116

PROPERTIES:

Meets code criteria for exterior cementitious coating

ICC-ES ESR 2564 includes 1 hour fire-resistive assemblies

COVERAGE:

Depending on the condition of substrate and the thickness of application, approximate coverages are:

- at 3/8 in. (9.5mm): 20 - 25 sq. ft. (1.9 - 2.3 sq. m.) /bag.
- at 1/2 in. (12.7mm): 15-19 sq. ft. (1.4-1.8 sq. m.) /bag.

CONTAINER:

80 lbs (36 kg) net weight in a moisture-resistant bag.

- Storage: Store off ground and protect from rain and moisture.
- Shelf Life: 12 months if properly stored.

WORKING TIME:

Sets in 30-40 minutes after mixing, depending upon conditions.

SURFACE PREPARATION:

- On masonry and concrete, apply only to surfaces that are sound, clean, dry, unpainted, and free of any residue which may affect the ability of 202 Armourwall Stucco Base Sanded to bond to the surface.
- On lathed construction, apply to lathing installed in accordance with ASTM C 1063. Cover wood-based sheathings with two layers of minium "10 Minute", or if lath is applied over tongue & groove EPS, one layer of "60 Minute", grade D building paper. Other sheathed substrates require one layer of "No. 15 asphalt felt or other approved water-resistive barrier.
- If EPS is over a solid sheathing instead of open framing, provide drainage by either: channeled EPS, drainage mat, or drainage type water-resistive barriers.
- Do not apply to substrates which are frozen or contain frost or ice.
- Apply to surface prepared as for portland cement plaster.
- For additional options for surface preparation, contact Parex USA Technical Services Department

MIXING:

- Use clean equipment for mixing and preparation
- Mixing ratio: approximately 1.5 gal (5.6L) water per 80 lb (34 kg) bag.
- First add approximately 90 percent of needed water in the mixer, then add the 202 Armourwall Stucco Base Sanded. When mixture becomes homogeneous, add remaining water. Mix at low speed for a minimum of 3 minutes, until the mixture is smooth. Do not overmix; never mix more than five minutes. Mix each batch for the same amount of time. Mix batches of the same size, using the same amount of water, to ensure consistency.
- Use cool, potable water; let hose run to clear it of hot water
- Use Parex 202 Armourwall Stucco Base Sanded immediately after mixing.
- Do not retemper Parex 202 Armourwall Stucco Base Sanded.
- Parex 290 Adacryl acrylic admixture and bonding agent may be added to 202 Armourwall Stucco Base. See 290 Adacryl data sheet for instructions.
- No other additives of any kind, such as portland cement, lime, rapid binders, antifreeze, accelerators, pigments, etc., should be added under any circumstances.

APPLICATION:

- Read the entire label before using this product.
- Thoroughly dampen, concrete and masonry substrate before applying 202 Armourwall Stucco Base Sanded, except when an acrylic bonder is used.
- Apply by hand trowel or plaster gun to a minimum 3/8 in. (9.5mm) thickness. The maximum thickness applied in one pass should be 1/2 in. (12.7mm).
- Smooth and level the first pass directly after application, or horizontally scarify for a key if applying a second coat

after the first coat dries.

- Allow 202 Armourwall Stucco Base Sanded to set before applying additional layers of 202 Armourwall Stucco Base Sanded. If the additional 202 Armourwall Stucco Base Sanded is not applied the same day, moisten the dry 202 Armourwall Stucco Base Sanded before applying second coat.
- Fog 202 Armourwall Stucco Base Sanded with water to moist cure it for the first 48 hours after it has set. Moist curing must be increased in dry weather and may be reduced in damp weather.
- For portland cement-based stucco finish, lightly moisten the surface of 202 Armourwall Stucco Base Sanded before application of finish.
- Allow 202 Armourwall Stucco Base Sanded to dry thoroughly before applying acrylic primers or finishes.

LIMITATIONS:

- Not for interior use over foam plastic.
- Ambient and surface temperature must be 40°F (4°C) or higher during application drying and moist curing. Protect from freezing for a period of not less than a 24 hours after set has occurred. Provide supplemental heat and protection from precipitation as needed.
- Ambient and surface temperatures must not exceed 120°F (49°C) during and 24 hours after application.
- Avoid application in direct sunlight in hot weather.

